

SPRAY TOPPING WITH SACOA ADJUVANTS

TECH NOTE SERIES



Version 2 | Date Jan 2020 | Ref 37 | Page 1

KEY POINTS

- Glyphosate is more effective early.
- Paraquat can be applied later than glyphosate.
- Clover seed set can be reduced if sprayed during flowering.
- Use *ENHANCE*® or *ANTIEVAP*® for spray topping.

Preventing seed set with a well timed spring herbicide application is an essential tool to reduce weed burdens – particularly for difficult to control in-crop weeds such as ryegrass, brome and barley grass.

To properly setup paddocks for a cropping phase, correct application timing and using the right herbicide with the right adjuvant is critical in getting complete weed set control.

Glyphosate and paraquat are the two main actives used for spray topping – the latter gives a good opportunity to rest glyphosate for resistance management and

prevent the onset of resistance. They need to be applied at different timings, with glyphosate being more effective when used early and paraquat later.

The key advantage of using paraquat as a contact herbicide is that it can be applied later than glyphosate, when weeds have developed past the flowering or milky dough stage. Glyphosate requires time to translocate through the plant and therefore should be applied at seed head emergence prior to the dough stage (see Figure 1). This is useful for controlling barley grass which has a longer flowering period – but care should be taken when applying in flowering legume pastures. Seed set in legumes can be reduced significantly if spray topping takes place during early to mid-flowering.

SACOA's adjuvants *ENHANCE*® and *ANTIEVAP*® make effective tank mix partners for glyphosate and paraquat, improving their activity by decreasing drift while increasing leaf coverage and herbicide uptake into the plant.

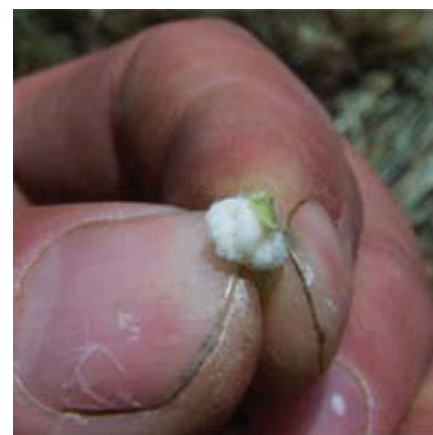


Image 1: Cereal grain at the soft dough stage.
(Source: Agriculture Victoria)

Mineral oils, such as *ANTIEVAP*®, are particularly effective at reducing evaporation in warm conditions (>25°C).

With the recent launch of newer and easier to handle paraquat formulations, such as Gramoxone 360 Pro® from Syngenta, a number of independent collaborative trials have been conducted to assess the performance of SACOA's range with these formulations.

KEY SPRAY TOPPING TIMINGS

Active (Rate gai/Ha)	Key weed controlled & timing
Paraquat (100gai/Ha)	Ryegrass – flowering heads in dough stage Barley & Brome grass – post flowering in the dough stage Silver Grass – prior to haying off
Glyphosate (110gai/Ha – 165 gai/Ha)	Ryegrass – during flowering when all tillers are in head Barley & Brome grass – at seed head emergence prior to dough stage Silver grass – early head stage

For more information
www.sacoa.com.au or
call 08 9386 7666

- ✓ Australian owned
- ✓ Specialist company
- ✓ QA manufacturing
- ✓ National distribution
- ✓ Full product support



REFERENCES

- <http://agriculture.vic.gov.au/agriculture/grains-and-other-crops/crop-production/when-to-cut-forage-cereals>
- <https://www.agric.wa.gov.au/grains/spray-topping-pastures>

FIND OUT MORE

Further information is available at www.sacoa.com.au or by contacting SACOA on 08 9386 7666 or contact your local SACOA representative;

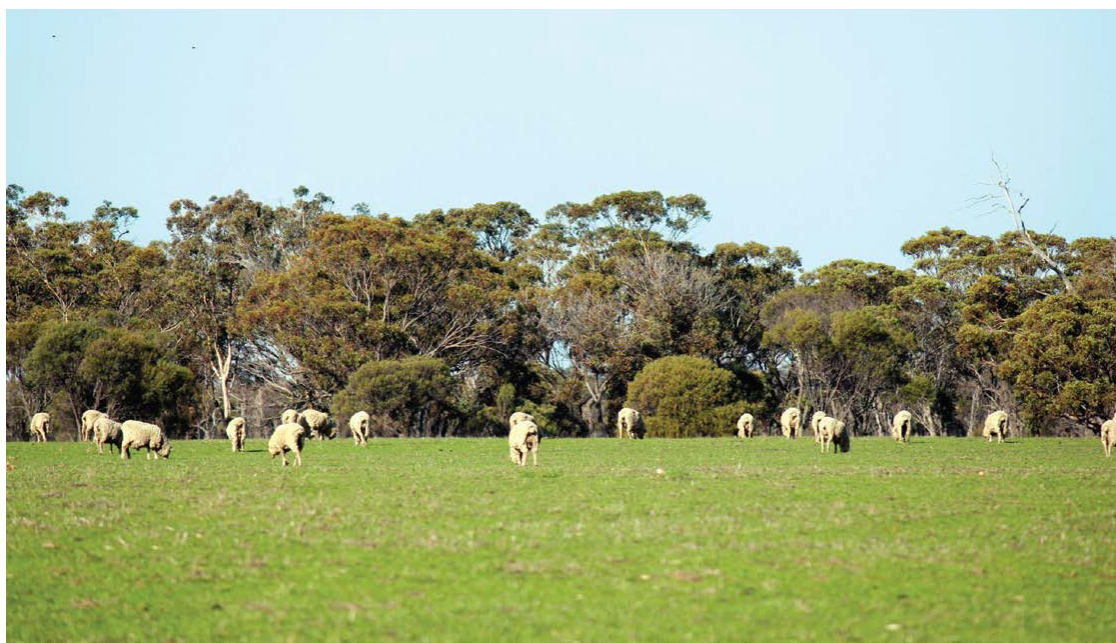
- Jamie Cox
North Eastern Regional Manager
0427 100 065
- Damon Fleay
Western Regional Manager
0427 425 702

DISCLAIMER AND COPYRIGHT

This document should act as a guide only and no purchase or usage decisions should be made based on the information provided without obtaining independent, expert advice.

SACOA and contributors do not necessarily recommend or endorse any products or manufacturers referred to. SACOA Pty Ltd will not be liable for any loss, damage, cost or expense incurred or arising by reason of any person using or relying on the information contained in this document. More information is available from SACOA via www.sacoa.com.au or 08 9386 7666, or by contacting your local reseller.

© 2020 SACOA Pty Ltd All Rights Reserved. SACOA and the GREEN S icon, ANTIEVAP, BIOPEST, COHORT 700, CROPSHIELD, ENHANCE, PLANTOCROP, STIFLE, X-SEED, LURE H2O and SE14 are registered trademarks of SACOA Pty Ltd.



For more information
www.sacoa.com.au or
call 08 9386 7666

- ✓ Australian owned
- ✓ Specialist company
- ✓ QA manufacturing
- ✓ National distribution
- ✓ Full product support



SACOA